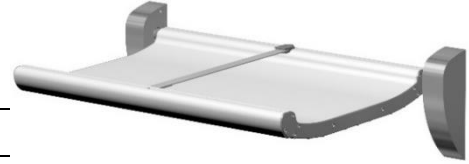




# SPARE PARTS LIST

## Baby changing table 659



Pos. No.	Art. No.	Spare part
1	65524	Hood for mounting bracket, complete, left
2	65525	Hood for mounting bracket, complete, right
3	65541	Crank
4	65546	Mounting bracket, complete, left
5	65547	Mounting bracket, complete, right
6	65534	Spacer Ø25 mm, for spindle
7	65531	End flange, left
8	65532	End flange, right
9	20040	Nut M5, stainless, self-locking
10	65516	Aluminium tabletop, 790 mm, white
11	20038	Nut M6, stainless
12	20047	Tight-fitting bolt M5 6x60 mm
13	20041	Allen bolt, stainless, M6 x 25 mm
14	20057	Locking ring Ø40 DIN 472
15	65562	Spherical bearing
16	20042	Allen bolt for crank (setscrew), stainless, M6 x 16 mm
17	65407	Gas spring, 350 N (Scandiloc or Megatrade)
	65406	Gas spring replacement set for the left and right side, complete with crank, screws etc.
18	65408	Spacer, flat, iron, Ø5.3 x 15 x 2 (one spacer per gas spring)
19	20044	Screw, countersunk, stainless, M4 x 20 mm, torx
20	20053	Screw, stainless, M6 x 20 mm, torx
21	20835	Spacer, flat, stainless
22+23+24	65551	Complete safety belt with buckle
25	40068	Screw, stainless, M4 x 12 mm, torx